

**PLEASE CHECK WWW.MOLEX.COM FOR LATEST PART INFORMATION**

**Part Number:** [0010101121](#)  
**Status:** **Active**  
**Overview:** [kk](#)  
**Description:** 5.08mm (.200") Pitch KK® PC Board Connector, Right Angle Mount Style A, 1.0µm (40µ") Tin (Sn), 12 Circuits

**Documents:**

[3D Model](#) [Product Specification PS-99020-0087 \(PDF\)](#)  
[Drawing \(PDF\)](#) [RoHS Certificate of Compliance \(PDF\)](#)

**Agency Certification**

CSA LR19980  
 UL E29179

**General**

Product Family PCB Receptacles  
 Series [3002](#)  
 Application Board-to-Board  
 Overview [kk](#)  
 Product Name KK®

**Physical**

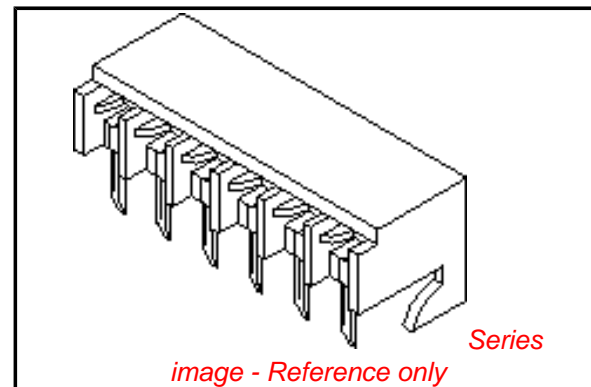
Circuits (Loaded) 12  
 Color - Resin Natural  
 Durability (mating cycles max) 25  
 Flammability 94V-2  
 Glow-Wire Compliant No  
 Material - Metal Phosphor Bronze  
 Material - Plating Mating Tin  
 Material - Plating Termination Tin  
 Material - Resin Nylon  
 Number of Rows 1  
 Orientation Right Angle  
 PC Tail Length (in) 0.169 In  
 PC Tail Length (mm) 4.30 mm  
 PCB Locator No  
 PCB Retention Yes  
 PCB Thickness Recommended (in) 0.062 In  
 PCB Thickness Recommended (mm) 1.60 mm  
 Packaging Type Tray  
 Pitch - Mating Interface (in) 0.200 In  
 Pitch - Mating Interface (mm) 5.08 mm  
 Plating min: Mating (µin) 40.00  
 Plating min: Mating (µm) 1.000  
 Plating min: Termination (µin) 40.00  
 Plating min: Termination (µm) 1.00  
 Polarized to PCB Yes  
 Temperature Range - Operating 0°C to +75°C  
 Termination Interface: Style Through Hole

**Electrical**

Current - Maximum per Contact 7A  
 Voltage - Maximum 250V

**Solder Process Data**

Lead-free Process Capability Wave Capable (TH only)



**EU RoHS**

**ELV and RoHS Compliant**  
**REACH SVHC**  
 Not Reviewed  
**Halogen-Free Status**

**China RoHS**



**Need more information on product environmental compliance?**

Email [productcompliance@molex.com](mailto:productcompliance@molex.com)  
 For a multiple part number RoHS Certificate of Compliance, [click here](#)

Please visit the [Contact Us](#) section for any non-product compliance questions.

**Search Parts in this Series**

[3002Series](#)

**Mates With**

[3003](#) , [2599](#) , [3008](#)

**Material Info**

Old Part Number

300212A

**Reference - Drawing Numbers**

Product Specification

PS-99020-0087

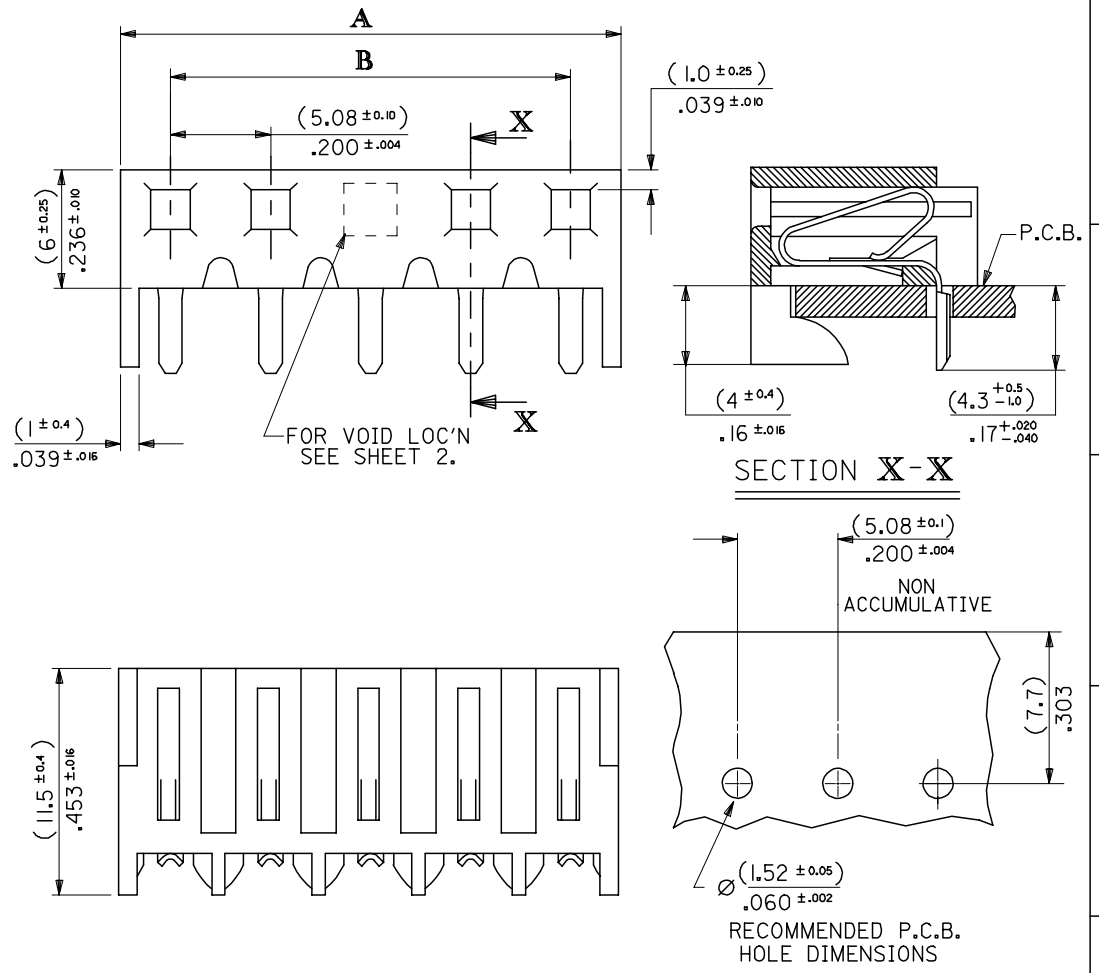
Sales Drawing

SDAE-3002-NA-\*

This document was generated on 05/21/2010

**PLEASE CHECK [WWW.MOLEX.COM](http://WWW.MOLEX.COM) FOR LATEST PART INFORMATION**

CCT	PART No.	ENG No.	DIM A	DIM B
2	10-10-1021	AE-3002-2A	(5.08 ± 0.10) .200 ± .004	(10.16 ± 0.25) .400 ± .008
3	↑ -1031	↑ -3A	(10.16 ± 0.10) .400 ± .004	(15.24 ± 0.25) .600 ± .008
4	-1041	-4A	(15.24 ± 0.10) .600 ± .004	(20.32 ± 0.25) .800 ± .008
5	-1051	-5A	(20.32 ± 0.10) .800 ± .004	(25.40 ± 0.25) 1.000 ± .008
6	-1061	-6A	(25.40 ± 0.10) 1.000 ± .004	(30.48 ± 0.25) 1.200 ± .008
7	-1071	-7A	(30.48 ± 0.20) 1.200 ± .008	(35.56 ± 0.25) 1.400 ± .008
8	-1081	-8A	(35.56 ± 0.20) 1.400 ± .008	(40.64 ± 0.25) 1.600 ± .008
9	-1091	-9A	(40.64 ± 0.20) 1.600 ± .008	(45.72 ± 0.25) 1.800 ± .008
10	-1101	-10A	(45.72 ± 0.20) 1.800 ± .008	(50.80 ± 0.25) 2.000 ± .008
11	-1111	-11A	(50.80 ± 0.20) 2.000 ± .008	(55.88 ± 0.30) 2.200 ± .008
12	-1121	-12A	(55.88 ± 0.25) 2.200 ± .010	(60.96 ± 0.30) 2.400 ± .008
13	-1131	-13A	(60.96 ± 0.25) 2.400 ± .010	(66.04 ± 0.30) 2.600 ± .012
14	-1141	-14A	(66.04 ± 0.25) 2.600 ± .010	(71.12 ± 0.30) 2.800 ± .012
15	-1151	-15A	(71.12 ± 0.25) 2.800 ± .010	(76.20 ± 0.30) 3.000 ± .012
16	-1161	-16A	(76.20 ± 0.25) 3.000 ± .010	(81.28 ± 0.40) 3.200 ± .012
17	-1171	-17A	(81.28 ± 0.30) 3.200 ± .012	(86.36 ± 0.40) 3.400 ± .012
18	-1181	-18A	(86.36 ± 0.30) 3.400 ± .012	(91.44 ± 0.40) 3.600 ± .012
19	↓ -1191	↓ -19A	(91.44 ± 0.30) 3.600 ± .012	(96.52 ± 0.40) 3.800 ± .012
20	10-10-1201	AE-3002-20A	(96.52 ± 0.30) 3.800 ± .012	(101.60 ± 0.40) 4.000 ± .012



**NOTES**

- HOUSING: NYLON, 94V-2, NATURAL
- HOUSING SUITABLE FOR  $(1.14 \pm 0.15) / .045 \pm .006$  RD. OR SQ. PINS
- TERMINAL: PHOS. BR, HOT TIN DIP.  $(1-2.5UM) / .0000040$  - .000100 IN.
- HOOKS AVAILABLE ON ENDS ONLY

<b>ENG NO. CORRECTION</b> EC NO: E2006-0204 DRWN: DENNEHY 2005/09/09 CHKD: GCSWEENEY 2005/09/09 APPR: DENNEHY 2005/09/22	<b>QUALITY SYMBOLS</b> $\nabla = 0$ $\triangle = 0$	GENERAL TOLERANCES (UNLESS SPECIFIED)		DIMENSION STYLE MM ONLY		SCALE 4:1	DESIGN UNITS METRIC	THIRD ANGLE PROJECTION		
		4 PLACES ± --- ± ---	3 PLACES ± --- ± ---	2 PLACES ± --- ± ---	1 PLACE ± --- ± ---	ANGULAR ± ---°	DRAFT WHERE APPLICABLE MUST REMAIN WITHIN DIMENSIONS	DRAWN BY GCH	DATE 1995/06/15	TITLE KONEKTCON AND P.C. TAIL TERMINAL ASSEMBLY (5.08) / .200 PITCH
		2 PLACES ± --- ± ---	1 PLACE ± --- ± ---	APPROVED BY JDENNEHY	DATE 2005/08/31	MATERIAL NO.	DOCUMENT NO. SDAE-3002-NA-*	SHEET NO. 1 OF 2		
		SEE CHART		MOLEX INCORPORATED						

THIS DRAWING CONTAINS INFORMATION THAT IS PROPRIETARY TO MOLEX INCORPORATED AND SHOULD NOT BE USED WITHOUT WRITTEN PERMISSION